



IRIS
CENTER

2023
Year in
Review

Preparing and
Supporting Educators
iris.peabody.vanderbilt.edu
iriscenter.com

IRIS USE: GLOBAL

OUR OBJECTIVE

The IRIS Center develops and disseminates free online resources about evidence-based instructional and behavioral practices (EBPs). Designed to translate research into practice, IRIS resources are used in preservice preparation and professional development (PD) activities and by individual educators for personalized learning.

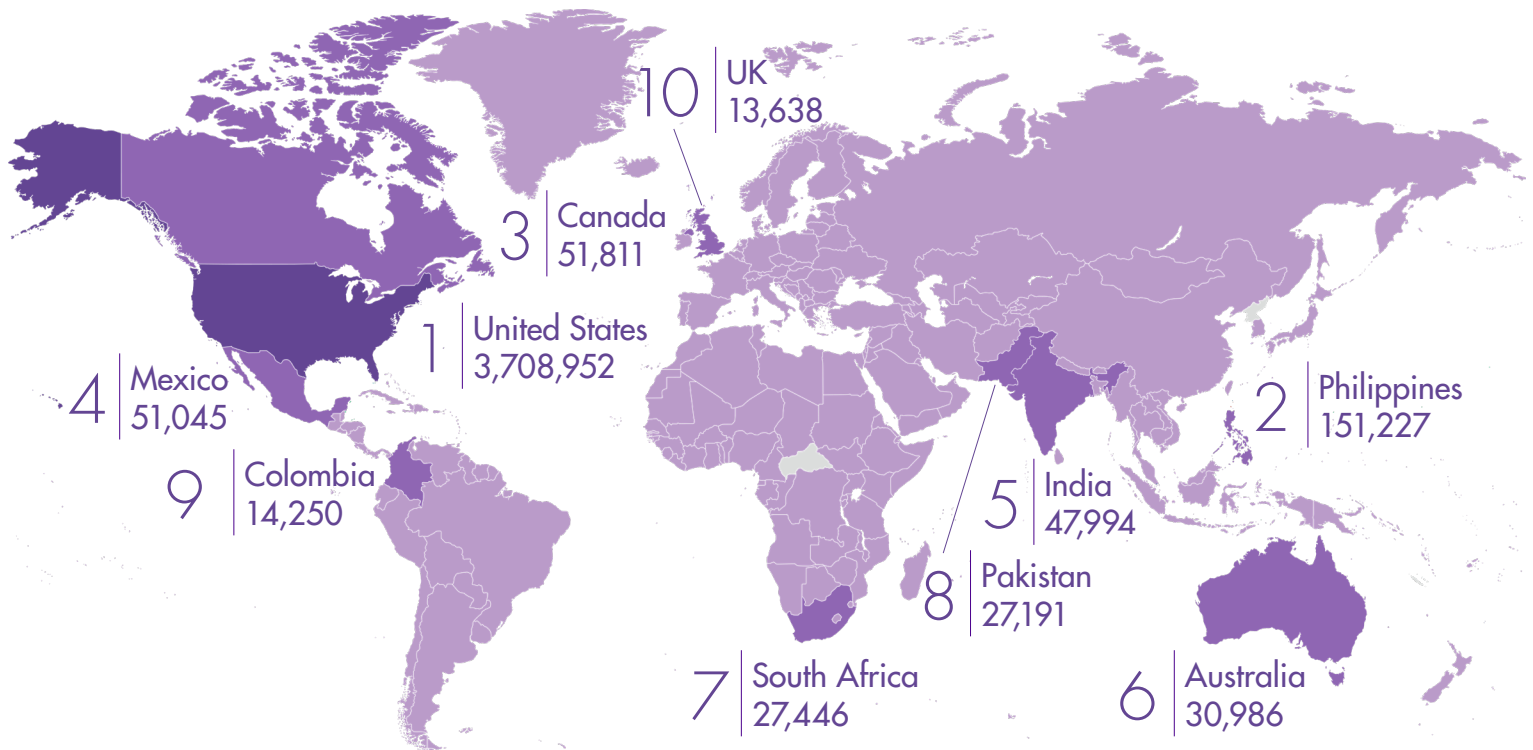
IRIS BY THE NUMBERS

In 2023, the IRIS website received 400,000 more visits than the previous year.

Users	2.1 million	Total pageviews	23.1 million
Visits	4.4 million	Avg grant cost per visit	31¢

GLOBAL USE

In 2023, IRIS was used in 226 countries and territories worldwide. The top 10 (by visits) are shown below.



Thank you for making this free! As someone who works overseas it is nice because I don't have a district person/website to go to. So your modules have been very helpful.

Independent User
2023 IRIS User Survey



This was a great resource for my teaching team! They were all engaged and learning. Even my veteran teachers were able to grow and learn from it.

School Leader
Differentiated Instruction Module

WHAT DID IRIS PRODUCE?

IRIS developed or revised 115 resources in 2023.

5 New Resources

Behavioral Principles: The Basics of Understanding Student Behavior	Module
Addressing Challenging Behavior (Part 1, Secondary): Understanding the Acting-Out Cycle	Module
Addressing Challenging Behavior (Part 2, Secondary): Behavioral Strategies	Module
Evaluating Student Performance Using a Trend Line Analysis: The Tukey Method	Information Brief
Active Supervision	Fundamental Skill Sheet

110 Revised Resources

Executive Functions (Part 1): Understanding Why Some Students Struggle	Module
Executive Functions (Part 2): Strategies to Improve Students' Academic Performance	Module
Progress Monitoring: Reading	Module
Progress Monitoring: Mathematics	Module
Universal Design for Learning: Designing Learning Experiences that Engage and Challenge All Students	Module
91 IRIS Wraparound Content Maps	
12 Learning Pathways	
2 Top Tips for Faculty and PD Providers	

HOW DO EDUCATORS LEARN ABOUT IRIS RESOURCES?

We Tell Them

- 80,000** people on our email list
- 9** conference presentations
- 6** IRIS Prep Talks for college faculty
- 4** conference exhibit halls
- 3** IRIS Workshops for doctoral scholars and PD providers

Others Recommend Us

- 4,200** websites link to IRIS
- 61** citations in peer-reviewed journals
- 38** citations in dissertations
- 29** citations in books
- 13** citations in online articles

IRIS PD

Educators can earn IRIS PD Certificates for module completion. In 2023, educators accessed:

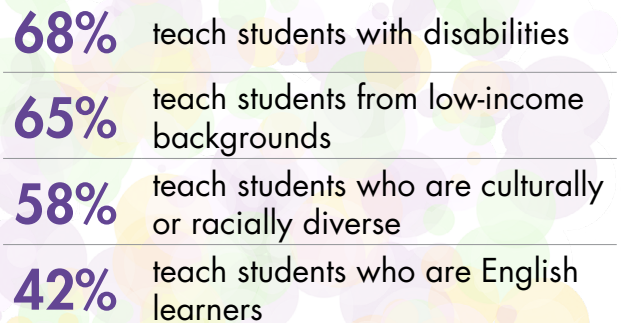
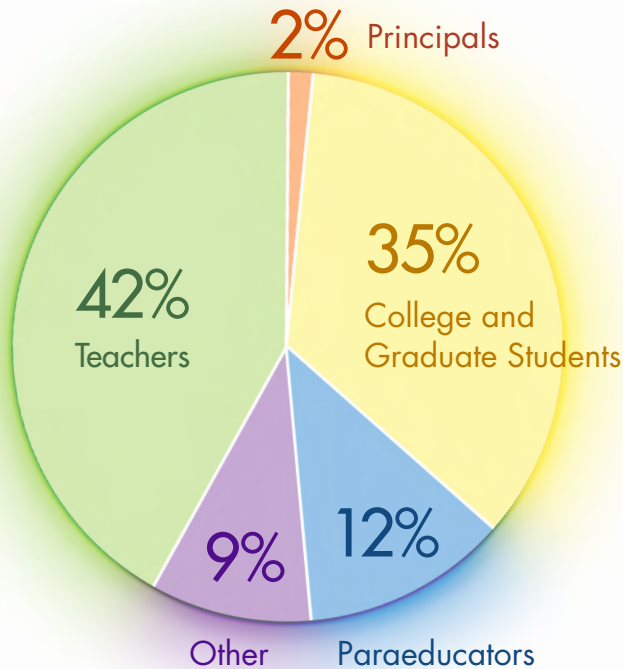
136,260 | PD
Certificates

\$6.8 | Million in
FREE PD

A generous gift from the Wachs family will help us provide free PD Certificates for Educators throughout 2024! What's more, the Wachs Family Endowed Fund for the IRIS Center allows us to accept donations to support our mission and help keep our resources free in the future.

WHO IS ACCESSING?

Nearly 41,000 educators set up new accounts in the IRIS PD Certificate platform in 2023. The majority were teachers and college and graduate students. These educators worked with diverse student populations.



Note: Results add up to more than 100% because respondents could select more than one group.

WHAT ARE THEY ACCESSING?

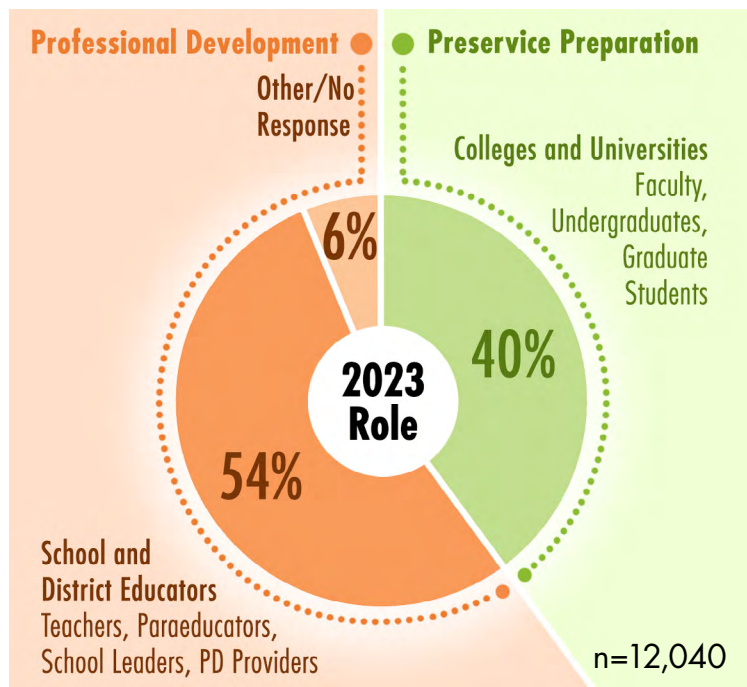
Most Popular PD Certificates in 2023

1. Addressing Challenging Behaviors (Part 1, Elementary): Understanding the Acting-Out Cycle
2. Classroom Behavior Management (Part 1): Key Concepts and Foundational Practices
3. Accommodations: Instructional and Testing Supports for Students with Disabilities
4. Autism Spectrum Disorder (Part 1): An Overview for Educators
5. Differentiated Instruction: Maximizing the Learning of All Students

IRIS MODULES

In 2023, IRIS received 12,040 user responses to our Online Module Feedback Form. Respondents self-identified their current roles and focus areas. They also rated the modules on multiple aspects.

ROLES



FOCUS AREAS

42% special education

39% general education

19% early intervention/early childhood

6% other*

*Other: related service providers, other school personnel (e.g., substitute teachers, hallway monitors, security officers, bus drivers), parents

Note: Results add up to more than 100% because respondents could select more than one group.

MODULE RATINGS

The 12,040 respondents rated multiple aspects of our modules on a 5-point scale.



TOP 5 MODULES ACCESSED

1. IEPs: Developing High-Quality Individualized Education Programs
2. Differentiated Instruction: Maximizing the Learning of All Students
3. Classroom Behavior Management (Part 1): Key Concepts and Foundational Practices
4. Functional Behavioral Assessment: Identifying the Reasons for Problem Behavior and Developing a Behavior Plan
5. Early Childhood Environments: Designing Effective Classrooms

IRIS IMPACT: COMPREHENSIVE USE ACROSS ALABAMA

IRIS resources are embedded throughout Alabama's personnel preparation system.

Challenge

The Alabama state legislature authorized the development of a temporary special education certificate (TSEC) program to address teacher shortages. The Alabama State Department of Education had only three months to develop the program.

IRIS

- » Provided support for the online learning session component of TSEC.
- » Connected Alabama with people who had successfully embedded IRIS resources into programs in two other states. They shared information, tips, and lessons from:
 - › Oklahoma Boot Camps
 - › Greater Louisville Education Cooperative's (GLEC) hybrid professional development on IEPs in Kentucky

Solution

Alabama built six professional learning sessions in Schoology, an online platform. Five of the learning sessions included IRIS resources. TSEC candidates work through 16 IRIS Modules and upload their PD Certificates for Educators into Schoology. IRIS resources were also used to build interactive activities in the TSEC platform.

Progress to Date

- » 136 of 180 TSEC teachers in Cohort 1 finished the required TSEC professional learning sessions in the first year of the program (2022–2023 school year).
- » There are currently 152 TSEC teachers registered for Cohort 2 (2023–2024 school year).

More than 20,000 educators at all stages of their careers accessed IRIS resources in 2023.

Initial Preparation

Preservice: IRIS is used in 20 colleges and universities across the state.

Alternative Certification Routes: 16 IRIS Modules are embedded in the TSEC program.

Onboarding

All new hires must complete three IRIS Modules.

- » Classroom Behavior Management (Part 1)
- » Classroom Behavior Management (Part 2)
- » Universal Design for Learning

Professional Development

Alabama education coordinators and directors use IRIS resources in trainings and recommend specific resources based on regional and individual needs.



We were given a timeline, three months to develop modules and a curriculum for teachers that were out of field. So, we ran to IRIS because it gives that direct knowledge that they need for being a teacher with students with disabilities. So, thank you, IRIS! You saved us again.

Alabama Education Specialist
IRIS Impact Story Interview

IRIS IN THE ALABAMA TSEC CURRICULUM

TSEC Sessions and IRIS Modules

Planning and the Learning Environment

- » IEPs: Developing High-Quality Individualized Education Programs
- » Accommodations: Instructional and Testing Supports for Students with Disabilities
- » Related Services: Common Supports for Students with Disabilities
- » Functional Behavioral Assessment: Identifying the Reasons for Problem Behavior and Developing a Behavior Plan

Development and Characteristics of Learners

- » Autism Spectrum Disorder (Part 1): An Overview for Educators
- » Cultural and Linguistic Differences: What Teachers Should Know

Instruction

- » Secondary Transition: Helping Students with Disabilities Plan for Post-High School Settings
- » Differentiated Instruction: Maximizing the Learning of All Students
- » Universal Design for Learning: Creating a Learning Environment that Challenges and Engages All Students
- » MTSS/RTI: Mathematics
- » High-Quality Mathematics Instruction: What Teachers Should Know
- » Secondary Reading Instruction (Part 1): Teaching Vocabulary and Comprehension in the Content Areas
- » Secondary Reading Instruction (Part 2): Deepening Middle School Content-Area Learning with Vocabulary and Comprehension Strategies

Assessment

- » The Pre-Referral Process: Procedures for Supporting Students with Academic and Behavioral Concerns
- » RTI (Part 1): An Overview

Foundations and Professional Responsibilities

- » Family Engagement: Collaborating with Families of Students with Disabilities



The [IRIS] content information is on par with what we had university professors here providing professional development on. I can't say it any better than it is right here. It's already laid out for you. It is exactly what we need. And I like that IRIS is attached with the university and the research, and being confident and knowing that what you have is evidence-based. It's not just somebody's opinion about something.

Alabama Education Specialist
IRIS Impact Story Interview

Did You Know?

Users report IRIS saves them time
in course and PD development.
How much time on average?

16 hours: Faculty

7 hours: PD Providers

