

2016 Data Summary



iris.peabody.vanderbilt.edu
iriscenter.com

Serving: Higher Education Faculty • PD Providers • Practicing Educators

Supporting the preparation of effective educators with the knowledge and skills to use evidence-based practices to improve outcomes for all children, especially those with disabilities.

What Is IRIS?

FUNDED BY

U.S. Department of Education's Office of Special Education Programs (OSEP)

PRIMARY OBJECTIVE

To develop and disseminate free online instructional resources about evidence-based practices for use in personnel preparation and professional development programs

RESOURCES

IRIS resources address important instructional and classroom issues. Aligned with professional standards and high-leverage evidence-based practices, IRIS Modules, Case Study Units, Activities, Information Briefs, and other materials are used by educators to improve the learning and behavioral outcomes of all children, especially those with disabilities. Current free online resources available from the IRIS Center include:

68

STAR Legacy Modules

Interactive
& Informative

17

Case Study Units

Increasing Levels
of Intensity

106

Classroom Activities

Applications
& Reflections

178

Video Vignettes

Watch
& Learn

SERVICES

Over the past four years, the IRIS Center has provided a wide range of tiered services to help college faculty and PD providers integrate information about evidence-based practices into their courses and training activities. IRIS services also help practicing educators who are working independently to upgrade their knowledge and skills.

76

Conferences

Presentations
Poster Sessions
Exhibit Booths

25

Targeted & Intensive Trainings

Faculty Seminars
Work Sessions
PD Seminars

8

Webinars

Topic-Specific
Website Overview
Module-Specific

Who Uses IRIS?

VISITS BY YEAR



2016 saw the largest number of visitors to the IRIS Website ever.

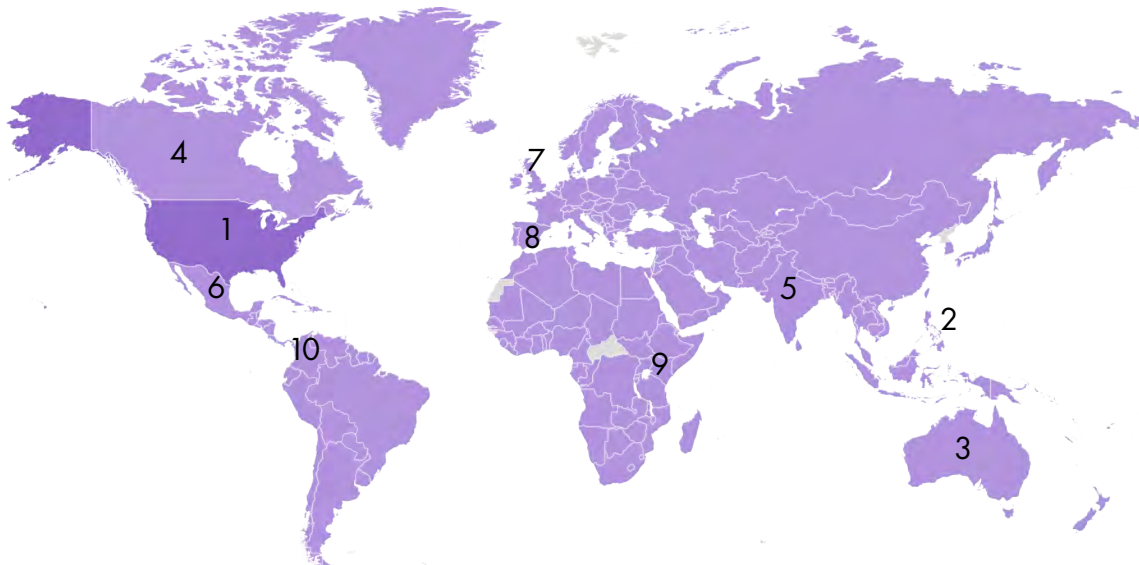
- **1.7 million visits** to the IRIS Website, an increase of **20%** over the previous year
- More than 15.6 million hits
- Average duration of visits: 15 minutes
- Average number of pages viewed per visit: 9

"I use IRIS Modules ALL the time! My students love them and so do I. I appreciate all that your Center does for education."

*Assistant Professor of Education
Carson-Newman University*

GLOBAL USE

During our current funding cycle, IRIS resources have been used in 231 countries and territories worldwide.



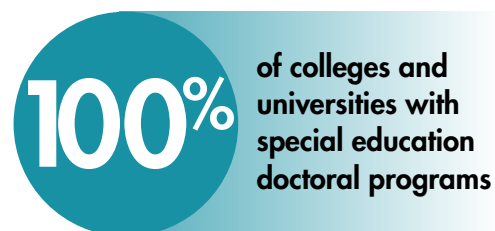
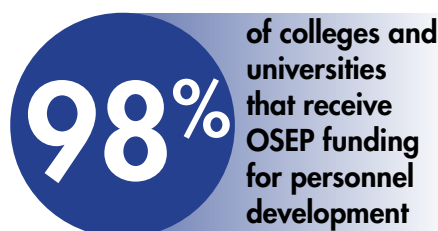
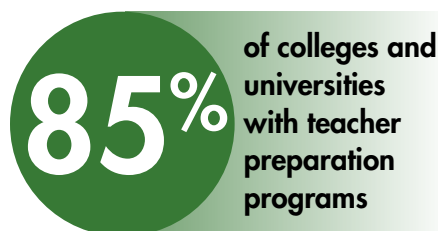
Top Users: 2016

1. United States
1,495,352
2. Philippines
31,046
3. Australia
16,647
4. Canada
15,786
5. India
13,119
6. Mexico
9,969
7. United Kingdom
9,668
8. Spain
5,514
9. Kenya
5,073
10. Columbia
4,518

Who Uses IRIS?

USE AT COLLEGES AND UNIVERSITIES

In the United States, **947** colleges and universities have both general education and special education teacher preparation programs. **How many use IRIS?**

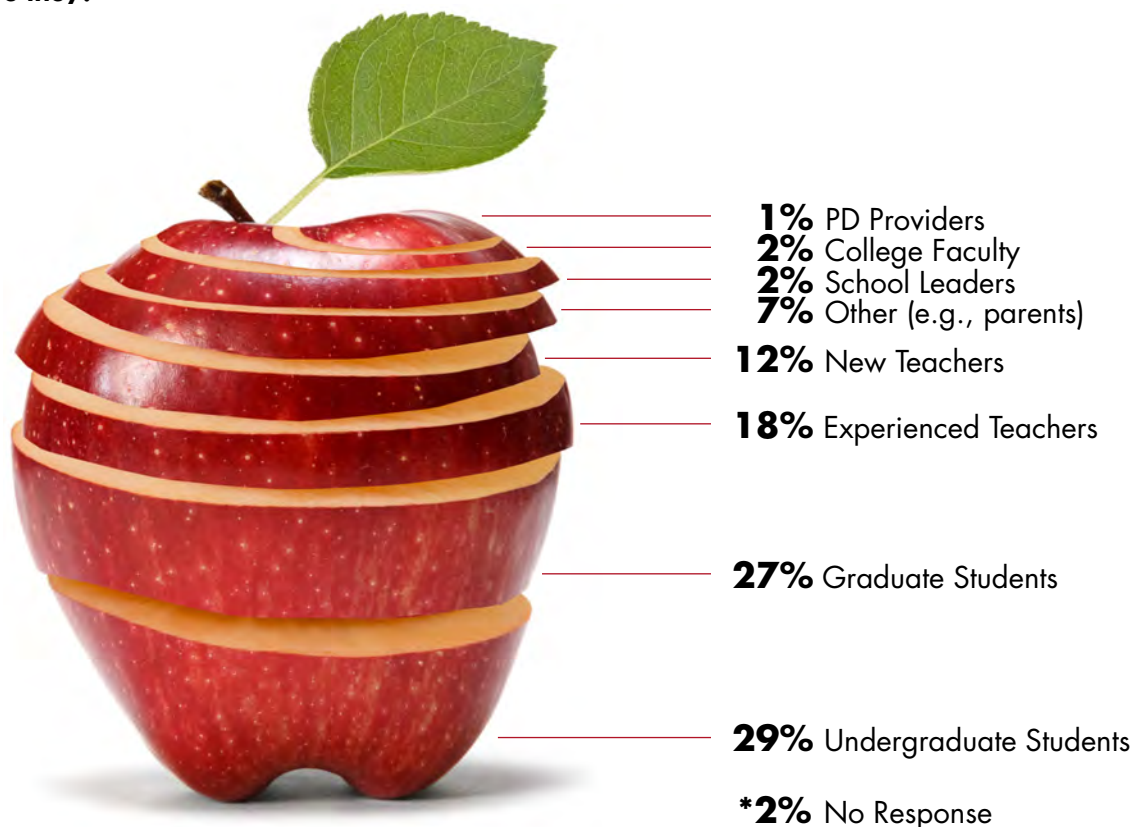


"I am really looking forward to using the Modules in class and as independent activities. There is such a wealth of resources within the Modules. I know my students will benefit."

*University Faculty
SUNY Oswego*

MODULE USERS

Our Online Module Feedback Form collects ratings, comments, and suggestions from a variety of IRIS users. **Who are they?**



What Do They Use?

MOST POPULAR IRIS RESOURCES IN 2016

IRIS *STAR* Legacy Modules remain our most sought-after resource.

Rank	Resource	# of Visits
1	Modules	1,336,353
2	Module Outlines	88,304
3	Case Study Units	44,039
4	Information Briefs	36,574
5	Activities	32,215
6	Film Tool	29,162
7	Video Vignettes	15,208
8	Evidence-Based Practice Summaries	10,219
9	Sample Syllabi	4,621
10	Glossary	2,922



"This is incredible! After the first day, I wanted to send emails to colleagues and share what I've learned. I will do that! I want all of you that presented to know that this was the best conference I have ever been to."

"The work of the IRIS Center has been influential and vital to the entire field."

Faculty Seminar Attendees

MOST POPULAR IRIS MODULES IN 2016

Google Analytics data reveal which Modules are used the most.

Rank	Resource	# of Visits
1	Universal Design for Learning	86,561
2	Functional Behavioral Assessment	82,387
3	Differentiated Instruction	78,797
4	Classroom Management (Part 1)	72,945
5	RTI (Part 1): An Overview	70,610
6	Teaching English Language Learners	53,081
7	High-Quality Mathematics	45,140
8	Assistive Technology	38,559
9	Classroom Management (Part 2)	38,080
10	Classroom Assessment (Part 1)	37,720

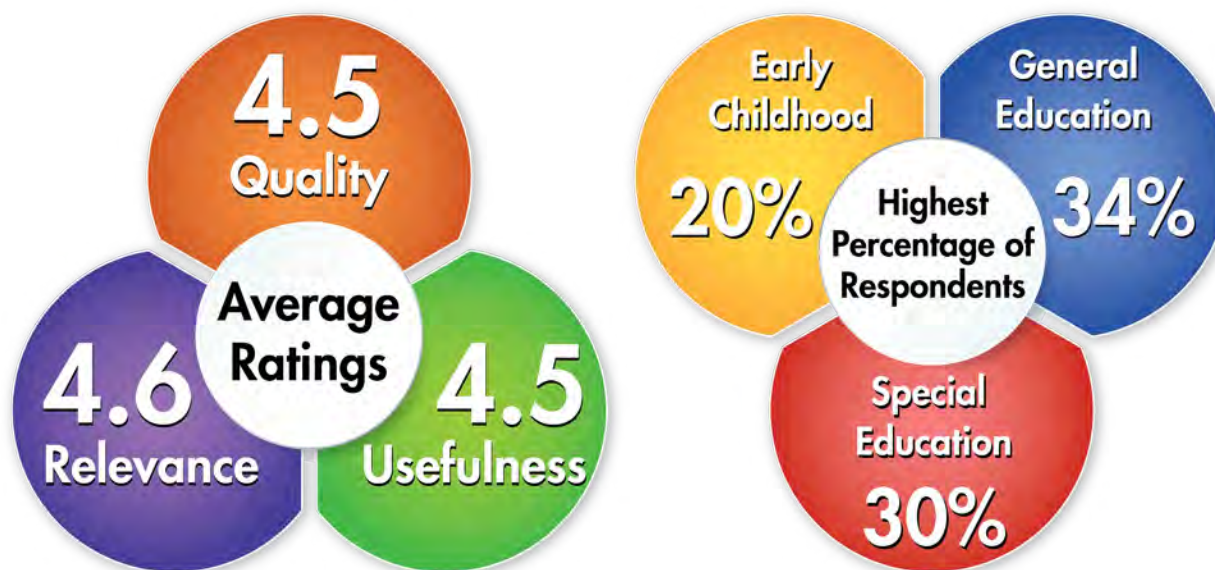


How Does IRIS Rate?

MODULE RATINGS

IRIS collects feedback from users through our Online Module Feedback Form. Last year, 3,068 respondents offered ratings on the quality, relevance, and usefulness of those resources (the scores below are on a 5-point scale).

- › College faculty gave the Modules the highest usefulness ratings (4.6). Graduate students gave the highest ratings for Module quality and relevance (4.6 and 4.7, respectively).



IRIS Is...Trustworthy

IRIS earned top ratings in a research study evaluating Websites that disseminate information on evidence-based practices. The findings were published in *Exceptional Children* (2016).

IRIS Is...Inclusive

IRIS has broad appeal. It is heavily used by general education, special education, and early childhood professionals.

TRAINING EVENT RATINGS

IRIS resources and trainings earn extremely high ratings from participants for quality, relevance, and usefulness (the scores below are on a 5-point scale).

	Quality	Relevance	Usefulness
IRIS Resources	4.8	4.7	4.7
Training Events	4.7	4.7	4.7
Training Materials	4.8	4.7	4.8

96% of colleges and universities where faculty attended face-to-face training events still have IRIS resources embedded in courses and curricula years later

Professional Development Opportunities

PD HOURS & DISTRICT PLATFORM

IRIS PD Hours Store

A low-cost and accessible online platform, the IRIS PD Hours Store has seen increased use. The PD Hours Store allows individual teachers to:

- › Select and work through more than 30 Modules covering a range of important instructional topics
- › Work at their own pace and track their own progress
- › Demonstrate their knowledge on Module-specific pre- and post-tests
- › Download Certificates of Completion as proof of effort

IRIS School- and District-Level PD Hours Platform

Now Available! The IRIS PD Hours School- and District-Level Platform offers school leaders an affordable, flexible, and intuitive tool with which to manage their professional development needs. Through it, they can:

- › Assign teachers Modules or bundles of Modules
- › Track teacher progress and easily export data for accountability
- › View Certificates of Completion
- › Communicate with teachers via an integrated email platform

The most popular Modules used for professional development:

Rank	Resource
1	Addressing Disruptive and Noncompliant Behaviors (Part 1)
2	Addressing Disruptive and Noncompliant Behaviors (Part 2)
3	Classroom Management (Part 1)
4	Differentiated Instruction
5	Classroom Management (Part 2)



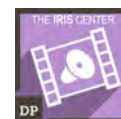
For more information, please visit
iris.peabody.vanderbilt.edu/pd-hours

MICRO-CREDENTIALS

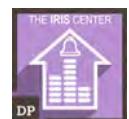
Coming Soon! In collaboration with Digital Promise, IRIS will offer our first “stack” of micro-credentials on instructional accommodations. Our micro-credentials will:

- › Focus on skills related to teaching students with disabilities
- › Provide opportunities for educators to learn and demonstrate discrete skills
- › Recognize educators for mastery of skills with shareable micro-badges

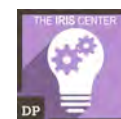
Instructional Accommodations



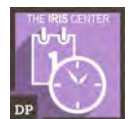
Presentation



Setting



Response



Timing



2016 Data Summary